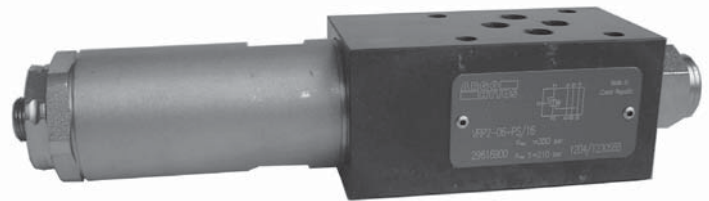
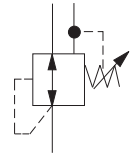


- ❑ For stacking assemblies
- ❑ 4 pressure ranges
- ❑ Pressure reduction in ports P
- ❑ Installation dimensions to ISO 4401/CETOP-RP 121H



Functional Description

The pressure valves VRP2 are directly operated reducing valves for vertical stacking assemblies designed as 3 way valves, i.e. with pressure protection of the secondary circuit.

The valve consists of the valve body (1), control spool (2), spring (3), adjustment element (4) and the plug G1/4 (5) for pressure measuring

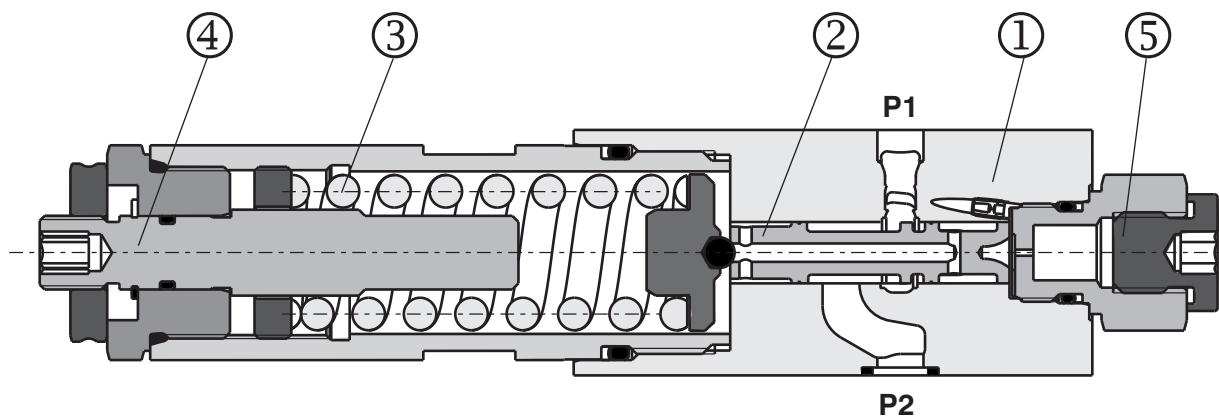
Model "B"

With model "B", the pressure reduction follows from port P2 to port P1, but it takes place only when the flow in port B passes in the direction to the user (not opposite). The protection of the secondary circuit is also ensured for one flow direction only.

Model "P"

With model "P", the pressure reduction follows from port P2 to port P1, but is effective in both flow directions through the directional valve (as well as the protection of the secondary circuit).

The valves are delivered with basic surface treatment. The valve body is phosphate coated, whereas the surfaces of the other parts are zinc coated.



Ordering Code

VRP2 - 06 - /

Reducing valve, directly operated

Nominal size

no designation

Seals
Standard (NBR)

Pressure reduction **Pressure control**

in port P1 from port B1
in port P1 from port P1

B
P

Pressure range

2 Adjustable up to 25 bar (363 PSI)
6 Adjustable up to 63 bar (914 PSI)
16 Adjustable up to 165 bar (2321 PSI)
21 Adjustable up to 210 bar (3046 PSI)

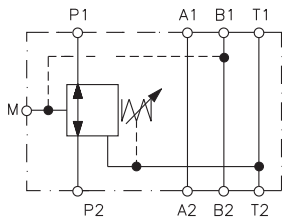
Adjustment element

Screw with outside HEX 6

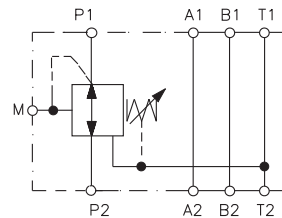
S

Functional Symbols

VRP 2-06-B . / . .



VRP 2-06-P . / . .

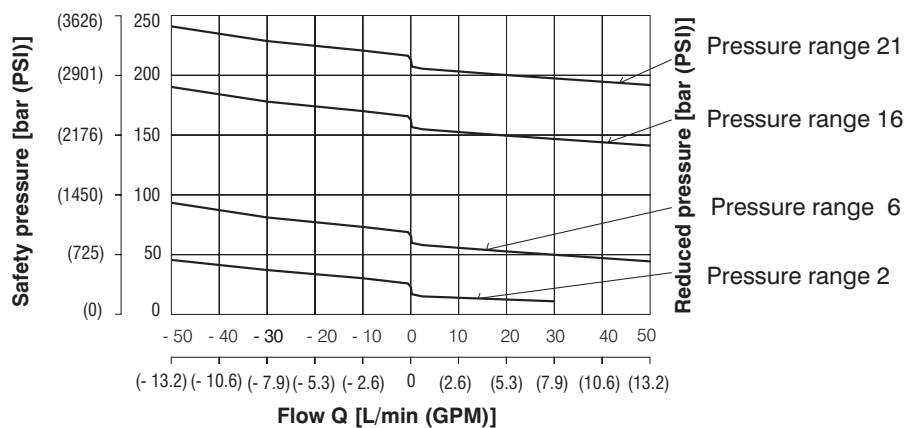


Technical Data

Nominal size		06 (D03)
Maximal flow	l/min (GPM)	50 (13.2)
Max. service pressure ports (P, T)	bar (PSI)	350 (5076)
Working pressure related to flow	bar (PSI)	see p-Q characteristics
Hydraulic fluid		Hydraulic oils of power classes (HL, HLP) to DIN 51524
Fluid temperature range	°C (°F)	-30 ... +100 (-22 ... +212)
Viscosity range	mm ² /s (SUS)	20 .. 400 (98 ... 1840)
Maximum degree of fluid contamination		Class 21/18/15 to ISO 4406
Weight	kg (lb)	1,50 (3.31)
Mounting position		unrestricted

p-Q Characteristics

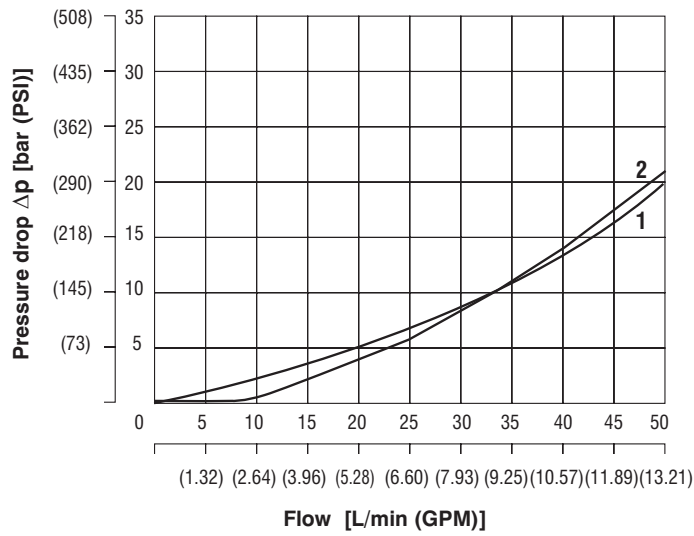
Measured at $v = 32 \text{ mm}^2/\text{s}$ (156 SUS)



Δp-Q Characteristics

Measured at $v = 32 \text{ mm}^2/\text{s}$ (156 SUS)

Pressure drop of reducing valve



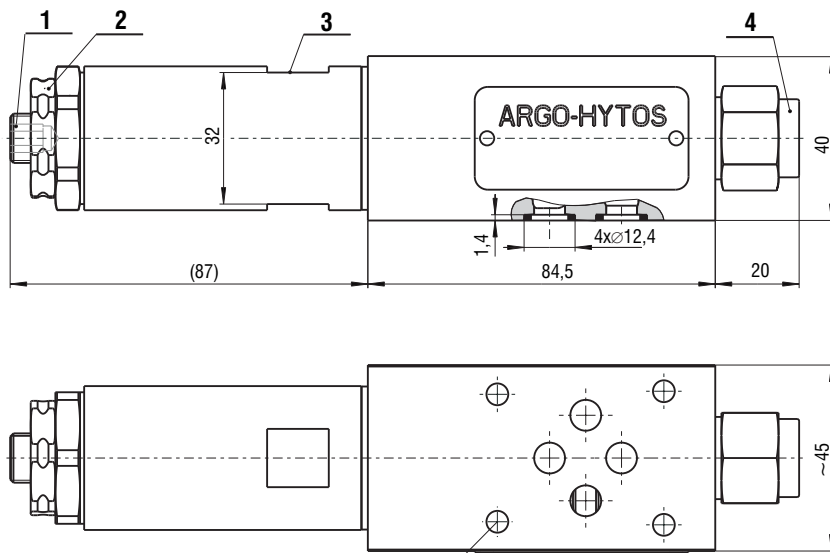
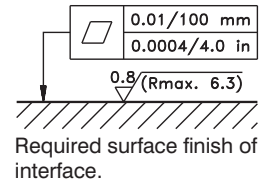
Model „B“ and „P“

Flow in direction	
1	P2 → P1
2	P1 → T

Valve Dimensions

Dimensions in millimeters (inches)

Model „B“ and „P“



Dimensions to ISO 4401

- 1 Pressure adjustment element “S”- screw with outside HEX 6
- 2 Locknut HEX 27
- 3 Wrench flats $s = 32 \text{ mm}$ (1.26 inch)
- 4 Plug for pressure gauge connection, thread G 1/4

Spare Parts

Seal kit

Type	Dimension, quantity	Ordering number
	Square ring	
Standard - NBR	9,25x1,6 DKAR00012BN7033 (4 pc.)	15608800

Caution!

- The plastic packing foil is recyclable.
- The transport plate can be returned to the manufacturer.
- If the valve is used separately without a directional valve, a cover plate DK1-06/32-3 with the same installation dimensions can be ordered. This plate connect port A1 with port P1 - see catalogue Adapter and Blanking Plates HA 0003.
- Mounting bolts M5x55 or studs must be ordered separately. Tightening torque of the screws is 8,9 Nm (6.56 lbf-ft).
- For applications outside these parameters, please consult the manufacturer.
- The technical information regarding the product presented in this catalogue is for descriptive purposes only. It should not be construed in any case as a guaranteed representation of the product properties in the sense of the law.

ARGO-HYTOS s.r.o. CZ - 543 15 Vrchlábí
 tel.: +420-499-403 111
 e-mail: info.cz@argo-hytos.com
 www.argo-hytos.com