

MAXIMATOR®

Maximum Pressure.

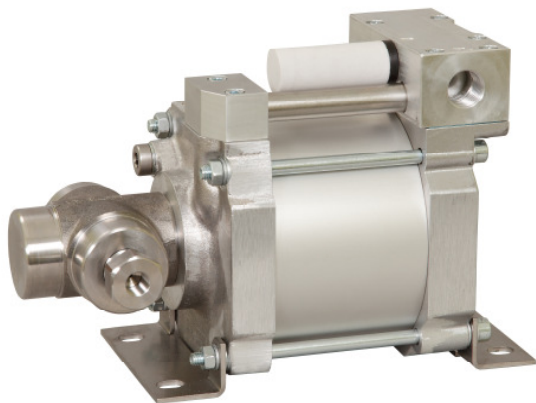


High Pressure Technology • Testing Equipment
Hydraulics • Pneumatics

Technical Data Sheet

S200 SS

» Water service



S200-SS
single acting, single air drive head

Technical Data:

Air drive pressure: 1-10 bar / 14,5 - 145psi

Calculated Outlet Pressure at an air drive of 10 bar/145 psi: 1.930 bar / 28,000psi

Pressure ratio: 1:193

Displacement volume/double stroke 2,5 cm³/ 0.15 cu.inch

Connections:

Inlet: 1/4" BSP

Outlet: 9/16-18 UNF (4H)

Air drive: 1/2" BSP

Maximum operating temperature: 60°C

Net weight: 7 kg

Pressure and flow performances, please see enclosed graph.

Wetted materials of construction:

Top cap: Aluminium

Air cylinder: Aluminium

Seal package: UHMWPE, Viton

Pump Body: 1.4313

HP Piston: 1.4112 (hardened)

Approximate Dimensions:

Height: 258 mm

Depth: 179 mm

Width: 135 mm

Available Accessories:

Air control units with filter pressure regulator, control pressure gauge and shut off valve: S200-SS with C1.5

To protect the pump against excessive outlet pressures or to limit the outlet pressure, a safety valve can be fitted to the air control unit in the air drive line: S200-SS with C1.5/SVair (The required outlet pressure has to be indicated.)

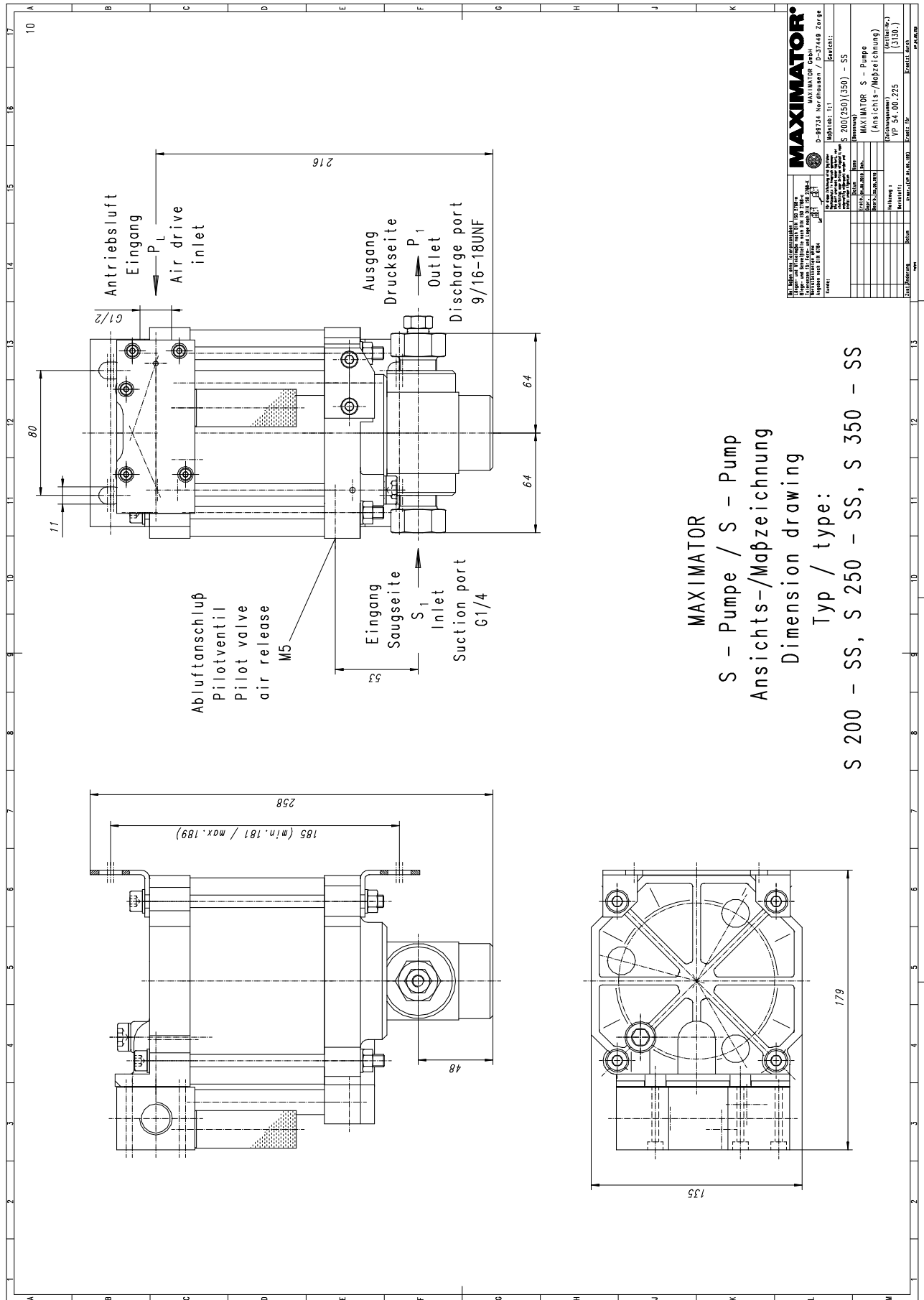
Please consult factory for more information. All technical and dimensional information subject to change. All General Terms and Conditions of sale, including limitations of our liability, apply to all products and services sold.

MAXIMATOR®

Maximum Pressure.



High Pressure Technology • Testing Equipment
Hydraulics • Pneumatics



Leistungsdiagramm/Performance Graph S 200 SS

Prüfflüssigkeit/Test Liquid: Wasser-Öl-Emulsion/Water Oil Emulsion ca. 1 - 10 cst

Werte berechnet / calculated values

