

C-CLAMPS

Hydraulic Accessories

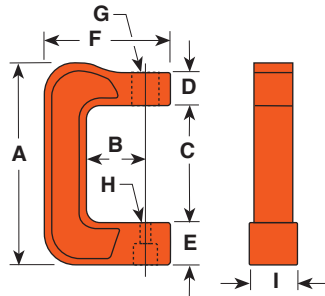
- In 5, 10 and 25 ton capacities.
- For use with Power Team general purpose single-acting series cylinders of comparable capacity.
- For clamping, pressing and bending. Ideal for welding and metal fabrication for fit-up of sheet or plate steel.
- Clamps withstand full rated capacity of the cylinders for which they are intended.
- To minimize the effects of off-center loading, the CC5, CC10 and CC25 should be used with the optional 350144 and 350145 swivel caps.



CC10

"C" CLAMPS 5, 10 & 25 TONS

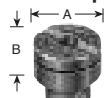
Items pictured are:
CC10
C104C
201923



A (in.)	B (in.)	C (in.)	D (in.)	E (in.)	F (in.)	G (in.)	H (in.)	I (in.)	Weight (lb.)	Cap. (tons)	Order Number (C-Clamp only)	Use With Cyl. No.
12 ³ / ₈	3 ³ / ₄	7 ⁵ / ₁₆	2	2 ¹ / ₂	7 ³ / ₄	1 ¹ / ₂ "-16 UN	7 ⁷ / ₈	3	25	5	CC5	C51C-C57C
15 ⁷ / ₈	6	9 ¹³ / ₁₆	2	3	10 ³ / ₄	2 ¹ / ₄ "-14 UNS	7 ⁷ / ₈	3 ¹ / ₂	50	10	CC10	C101C-C1010C
21	6	13	3	4	12 ⁵ / ₁₆	3 ⁵ / ₁₆ "-12 UNS	1 ⁷ / ₁₆	4 ⁵ / ₈	65	25	CC25	C251C-C2514C

OPTIONAL ACCESSORIES FOR USE WITH CC5, CC10 & CC25 HYDRAULIC CLAMPS

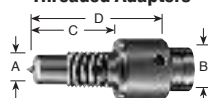
Swivel Caps



5/10 ton
350144*
A-1³/₈"
B-3³/₄"

25 ton
350145
A-2"
B-1"

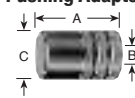
Threaded Adapters



10 ton
38597
A-1 - 8
B-1 - 8
C-3³/₄"
D-2"

25 ton
38953
A-1¹/₄-7
B-1¹/₂-16
C-2³/₄"
D-4³/₈"

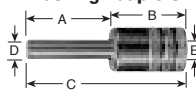
Pushing Adapters



10 ton
28228**
A-2³/₈"
B-1 - 8
C-1¹/₂"

25 ton
28229**
A-2⁷/₈"
B-1¹/₄-7
C-1³/₄"

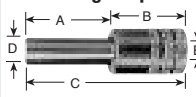
Pushing Adapters



10 ton
201923**
A-3¹/₄"
B-2¹/₄"
C-5³/₈"
D-1¹/₂"
E-1 - 8

25 ton
34510**
A-3¹/₄"
B-2⁵/₈"
C-5⁷/₈"
D-3³/₄"
E-1¹/₄-7

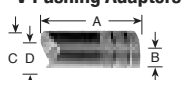
Pushing Adapters



10 ton
201454**
A-3¹/₁₆"
B-2⁵/₈"
C-5¹/₁₆"
D-3³/₄"
E-1 - 8

25 ton
34511**
A-3¹/₄"
B-2³/₈"
C-5¹/₈"
D-1"
E-1¹/₄-7

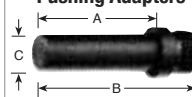
V Pushing Adapters



10 ton
34806**
A-2⁵/₈"
B-1 - 8
C-1¹/₂"
D-1"

25 ton
34807**
A-3¹/₈"
B-1¹/₄-7
C-1³/₄"
D-1¹/₄"

Pushing Adapters



5 ton
309874*
A-2¹/₃₂"
B-2²⁵/₃₂"
C-5⁵/₈"

* May be used with CC5
** Must be used with a threaded adapter.

